

PLU: 553735
CODE: CZ004A
Manufactured and packaged for
SRGS PTY LTD
ABN 23 113 230 050
6 Coulthards Avenue, Strathpine,
QLD 4500, Australia
MADE IN CHINA

4x4 ACCESSORIES

**+ 4WD Single Drawer
With Slide
Instruction Manual**



+ 4WD Single Drawer With Slide – PLU 553735

- + Thank you for purchasing the XTM 4WD Single Drawer With Slide. Before use, please ensure that the latches inside the drawer will stop on the bumpers inside the drawer casing.

Below is an image of the latches inside the drawer. The drawer tub can be removed by pulling these two latches together.



NOTE: The weight ratings for the drawer tub and slide are 60kg each and the cutting board 15kg.

+ Part List



+ Drawer Specifications

External Size: L88 x W47 x H26.5cm

Net Weight: 30.7kg

Top Slide Out: 55cm

Cutting Board Slide Out: 49cm

Drawer Pull Out: 55cm



+ Mounting Kit

4 x M10 x 55mm bolts

4 x M10 washers

4 x M10 nylon nuts

4 x M10 spring washers



+ Tie Down Kit

4 x M8 x 12mm bolts

(For stacking two drawers together)

4 x tie down rings

4 x M8 nylon washers

4 x M8 washers

+ Locating Mounting Space in Car



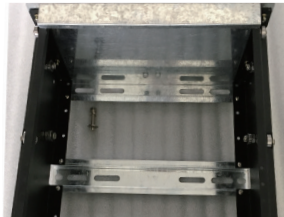
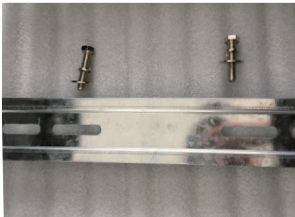
+ IMPORTANT

Before installing the drawer, please check the car owner's handbook or the rear base of your vehicle for anchor point location.

+ If available, use the chair anchor points to bolt the drawer onto your car.

+ Check the size between the chair mounting points and compare with the mounting rail at the bottom of the drawer.

+ Move mounting rail to desired position.



+ Use the M10 bolts, nuts and washers from mounting kit to bolt drawer. Some vehicles may require longer or shorter bolts. Please check your owner's handbook or contact your local vehicle dealer if unable to locate or no anchor points available.

+ To access the bottom mounting rail easily, slide out the top panel and carefully pull out the drawer tub.

+ Release the two latches at rear of drawer for ease of removal. They need to be tightened if the draw comes loose or out of the casing.

WARNING

CHECK ANCHOR POINTS REGULARLY TO ENSURE DRAWER IS SECURELY ATTACHED.
DO NOT ANCHOR CHILD RESTRAINTS TO THE DRAWER.

+ Stackable Vertical Drawer Option

- + The universal design allows drawers to be stacked. Use the M8 bolts and washers/nuts provided and follow the steps below:



+ Configurations



4WD Single drawer with slide (PLU 553735)



4WD Single drawer (PLU 584030)



4WD Single drawer with slide (PLU 553735)

4WD Single drawer (PLU 584030)

- + 4WD Single drawer sold separately (PLU 584030).
- + All drawers sold separately.